

2011 LIMITED EDITION



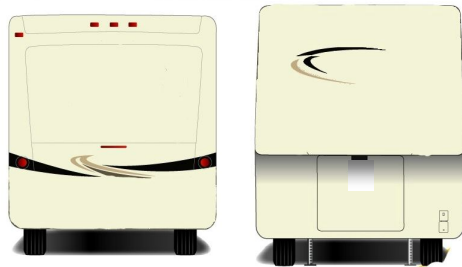
BY FORKS RV

CUSTOM BUILT LUXURY COACHES



FEATURING THE ORIGINAL INDUSTRIAL GRADE "LOW BOY" CHASSIS. STRONGEST FRAME AVAILABLE!

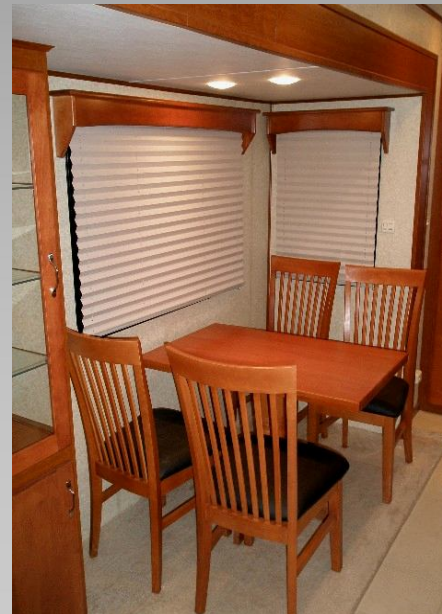
NO COMPROMISES!



STANDARD FULL BODY PAINT AND FRAMELESS THERMOPANE WINDOWS



RICH FINE VELVET CHERRY STYLED CABINETRY WITH SMOOTH SLAB CABINET DOORS AND SLIDE OUT FASCIA



LUXURY SOLID SURFACE TOPS AND PORCELAIN TILE FLOORS ARE STANDARD IN THE LIMITED

2010 LIMITED EDITION FIFTH WHEEL STANDARD FEATURES

The Continental Coach Limited Edition is designed to offer the more affordable way to have the ultimate in luxury trailers. Loaded with the standard features you crave, and quality built to handle the stress your usage demands. Continental Coach Limited Edition...**NO COMPROMISES!**

FRAME AND STRUCTURE

- THE ORIGINAL "LOW BOY" INDUSTRIAL GRADE 12" 19 POUND, WIDE FLANGE, STEEL I-BEAM FRAME
- MAXI STORAGE FRAME DESIGN AND SKIRTING
- HEAVY DUTY KING PIN WITH SOLID STEEL SKID PLATE
- STEEL REINFORCED SUPER STRUCTURE
- TRIPLE AXELS-7000LB WITH ELECTRIC DRUM BRAKES
- INDUSTRIAL GRADE "BULL DOG" FRONT LANDING GEAR
- 16" G-RATED TIRES
- ALUMINUM MAG WHEELS
- "EFFICIENCY DESIGN" TRUSS ROOF RAFTERS
- 7/16 ROOF DECK
- 3/4" TOUNGE AND GROOVE FLOOR DECKING
- ALL-WEATHER RUBBER ROOFING
- RADIUSED ROOF RAIL
- FULLY ENCLOSED UNDERBELLY
- ENCLOSED AND HEATED HOLDING TANKS
- INSULATION PACK/ MINIMUM:
 - R7 SIDEWALLS
 - R14 ROOF/FRONT/BACK
 - R14 UNDERBELLY
- 76" MINIMUM SLIDE ROOM CEILING HIEGHT
- BASEMENT STORAGE W/ CARPETING
- REAR STABILIZER JACKS

EXTERIOR FEATURES

- GELCOAT FIBERGLASS EXTERIOR
- MOLDED ONE PIECE FIBERGLASS FRONT AND REAR END CAP
- FRAMELESS THERMOPANE WINDOWS TINTED
- FULL BODY PAINTED EXTERIOR GRAPHICS
- PORCH AWNING
- LED RUNNING LIGHTS
- ENTRANCE GRAB HANDLE
- 34" ENTRANCE DOOR W/ DEAD BOLT LOCK
- (3)EXTERIOR SECURITY LIGHTS
- FOLDING EXTERIOR STEP
- UTILITY HOOK UP STATION
- UNDERMOUNT SPARE TIRE
- (16" G-RATED WHEEL)

TANK CAPACITIES

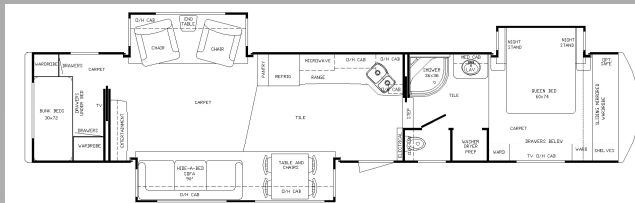
- 81 GALLON FRESH WATER TANK
- 55 GALLON SEWAGE TANK
- 55 GALLON GRAY TANK
- 10 GALLON WATER HEATER

ELECTRICAL, HEATING & COOLING

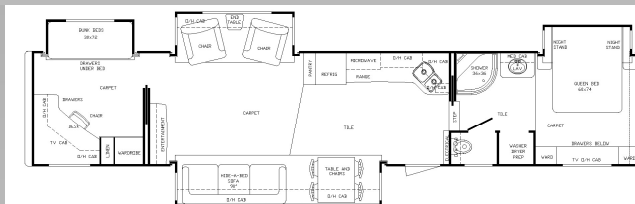
- 220 ELECTRICAL WIRING
- 42,000 BTU FURNACE
- TWIN 55 AMP 240v. CONVERTER
- L.P. GAS PREP
- 50 AMP SERVICE
- DEEP CYCLE BATTERY
- MONITOR SYSTEM CONTROL PANEL
- DUAL ROOF PREP FOR PORTABLE 18" DSS SATILITE
- TV ANTENNA W/ POWER BOOSTER
- TV PREP TO ENT. CENTET, MASTER BED, 2ND BED

INTERIOR FEATURES

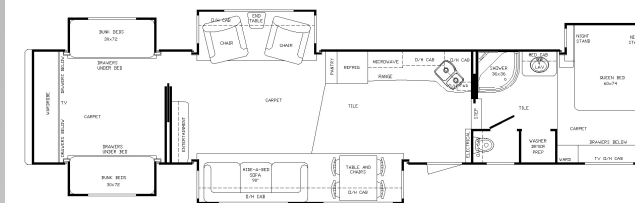
- FINE VELVET CHERRY FINISH WOOD PACKAGE
 - SMOOTH SLAB STYLE SOLID MAPLE HARDWOOD DOOR AND DRAWERS
 - MODERN STYLE CURVED CABINET HARDWARE
- SMOOTH STYLE "RADIUSED OUT" SLIDE OUT ROOM FACIA
- FULL EXTENTION DRAWER GUIDES
- POLISHED SOLID SURFACE COUNTERTOPS (KITCHEN&BATH)
- VINYL CEILING
- RESIDENTIAL GRADE CARPET
- DESIGNER POLISHED PORCELAIN TILE (KITCHEN AND BATH)
- HARDWOOD DÉCOR MATCH WINDOW VALANCES
- FREE STANDING DINETTE AND 4 CHAIRS
- 90" HIDE-A-BED SOFA
 - GLIDER, RECLINER CHAIR (2)
- QUENN SIZE BED WITH LIFTERS
- QUENN SIZE PILLOW TOP MATTRESS
- STORAGE UNDER BED
- PLEATED WINDOW SHADES
- HALOGEN "PIN SPOT" CEILING LIGHTS
- L.E.D. CURTESY LIGHTING
- CLEAR GLASS VESSEL BOWL W/CHROME FILLER (BATH)
- PORCELAIN STOOL
- EXHAUST FAN (IN BATH ROOM)
- SHOWER SKYLIGHT
- RADIUS SHOWER & DOOR
- WARDROBE LIGHTS
- FIRE EXTINGUISHER
- SMOKE DETECTOR
- CO DETECTOR
- OVER/UNDER DOOR REFRIGERATOR
- DOMETIC MICROWAVE
- SEALED 3 BURNER STOVE WITH OVEN
- WASHER AND DRYER PREP



44' DOUBLE BED ROOM W/ 3 SLIDE OUT ROOMS



48' DOUBLE BED ROOM W/ 4 SLIDE OUT ROOMS



50' DOUBLE BED ROOM W/ 5 SLIDE OUT ROOMS



A DIVISION OF FORKS R.V.

11280W-US HIGHWAY 20 PH:574-825-7467
SHIP SHEWANA, IN 46565 FAX:574-825 1118

WWW.FORKSRV.COM