

2009/10 Forest River Sierra Fifth Wheel



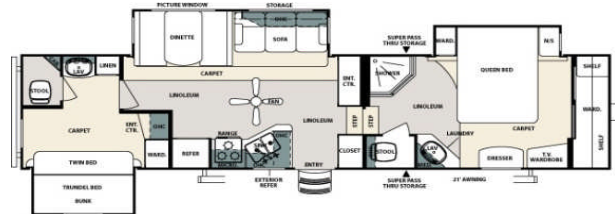
300BH 35' 11" (10.9 m)



300RG 33' 3" (10.1 m)



300RL 33' 3" (10.1 m)



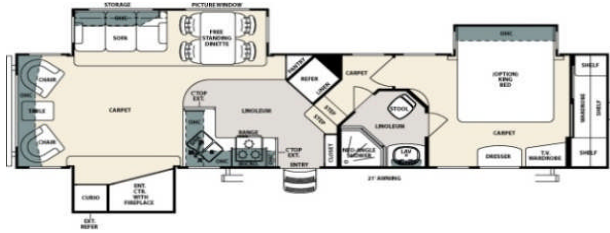
316BHT 38' 5" (11.7 m)



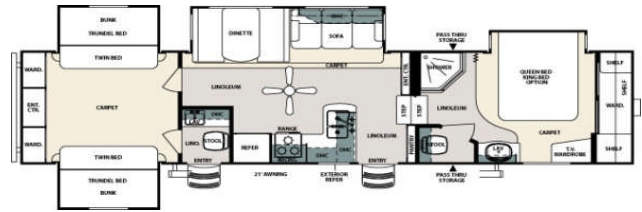
345QB 39' 10" (12.1 m)



345RET 38' 11" (11.9 m)



345 RLG 39' 1" (11.9 m)



355 QBQ 39' 3" (12.0 m)



356 RL 39' 4" (12.0 m)



365 RG 40' 9" (12.4 m)

Sierra Signature Package (Mandatory Option)

- High Gloss Gel-Coat Fiberglass
- Wrought Iron Package
- Flat-Screen LCD/HD TV (Sizes vary per floorplan)
(Tube TV in TT's per floorplan)
- AM/FM/CD/DVD Player w/ MP3 Capabilities

Exterior Features

- New Aerodynamic Fiberglass Front cap with improved turning radius
- Ultra lube axles
- Large Tinted windows with 80/20 UV Prohibitor
- Radius Triple step w/9" riser
- Dometic™ "One-Touch" Electric Awning w/ individual adj. Arms
- Power front jacks (5th's)
- 16" Radial tires-E Rated (5th's)
- Automotive-style fender skirts
- Hitch light
- Exterior refrigerator (per floorplan)
- Porch light w/interior switch
- Step light - main entrance
- Patio Recreation light with interior switch
- 30 lb. double LP tanks w/auto changeover
- Roof ladder (Std. on 5th's)
- Black Tank Flush
- 2 Exterior Speakers
- Rain Gutters With Extra Long Drip Spouts (prohibits black streaking)
- Insulated Heavy Duty Lockable Baggage Doors
- Exterior Foldable Grab Handle
- Pass-Through Storage Area
- 2 Spray Ports with 25' hose (one on each side)

Interior Features

- Serta® Dreamscape Mattress
- 84" interior height w/ 6'4" slide heights(5th's)
- Four color coordinated interiors
(Cognac, Seabreeze, Sandstone, Espresso)
- Full Extension Ball bearing drawer glides
- Stone Cast Under mounted Kitchen Sink
- Handmade Cabinetry with Screwed lumber core stile construction
- Solid Hardwood Main Slideout Fascia
- Self Edged Residential Countertops
- Extra Large Picture Windows throughout
- Fantastic fan in bathroom
- Vented side windows in slideouts
- TV antenna w/booster
- Surround sound TV hook-up
- Solid oak drawer fronts w/pine sides
- Raised panel cabinet doors (uppers and lowers)
- Bedroom Slideout Fascia
- Neo angle shower w/glass door (where available)
- Designer Window treatment accented per Décor
- Overhead cabinet in slideout
- Residential Black panel Refer Door Insert
- Ceiling Fan w/Lighting Kit (5th's)
- High Rise Kitchen Faucet
- 2 Decorative Throw Pillows on Sofa
- Upgraded Decorative lighting throughout
- King bed (where available)
- Sofa w/ air mattress
- 24 oz. carpeting
- Center mounted A/C unit
- Trundle beds under bunks
- Quilted bedspread
- Shower Surround with Etched Tile Pattern

Appliances / Systems

Ducted Dometic® 15K A/C with quick cool
Floor Ducted 35,000 BTU Furnace
10 gal. gas/electric DSI water heater
Full Coach Water Filtration System
Three burner high output range w/ 22" oven
8 Cubic Ft. Double Door Refrigerator
Interior Monitor Panel for Holding Tanks
Interior Thermostat for Heating and Cooling
Flush Floor Hydraulic Slideouts (per floor plan)
Satellite and Cable Hookup with RG-6 cable

Construction

Welded Aluminum-framed, Vacuum
Bonded Laminated Superstructure
2" x 3" floor joists 12" on center
5/8" tongue & groove plywood floor decking
3/8" roof decking (full walk-on roof)
Cambered Powder Coated frame with Rust Prohibitor
Fully Enclosed underbelly, insulated with radiant heat
5" truss roof rafters
R-10 sidewall construction
Laminated and Fully insulated Bathroom Floor Deck (5th's)

For Your Safety

Carbon Monoxide detector
Smoke Alarm
Fire extinguisher
Breakaway switch (Battery hook-up required)
Dead-bolt lock on entry door
Liquid Propane (LP) Gas detector
Fire escape windows

Options

La-Z-Boy Recliner IPO Swivel Rocker
Raised Mahogany refrigerator door insert
Decor Matching, Swivel, Glider Recliner(s) (per floorplan)
Free-standing dinette with 4 chairs
Washer/Dryer prep
Sofa IPO Bottom Bunk (per floorplan)
Aluminum wheels (Travel Trailers)
Second air conditioner-Bedroom
Serta® Dreamscape Euro-top mattress
Fantastic fan with Power Hood operated with wall switch
Slide Room Awnings
12 Volt Heated Holding tanks
Equaflex™ Equalizer System
Hide-A-Bed w/Air Mattress & Hidden Storage Drawer