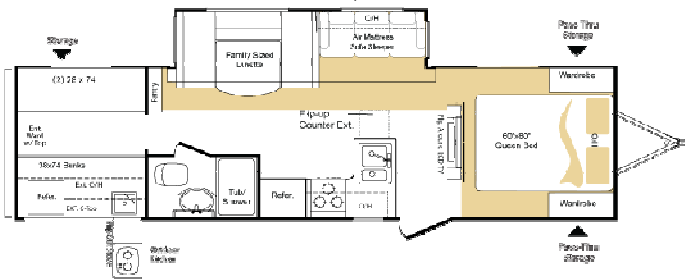


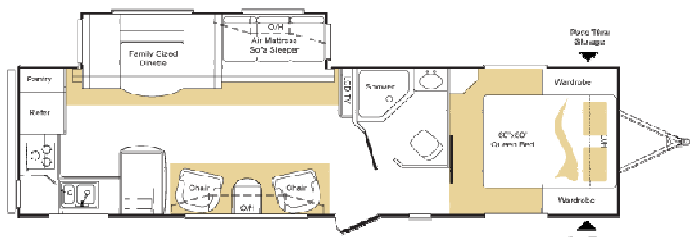
2010 Keystone Laredo Travel Trailers



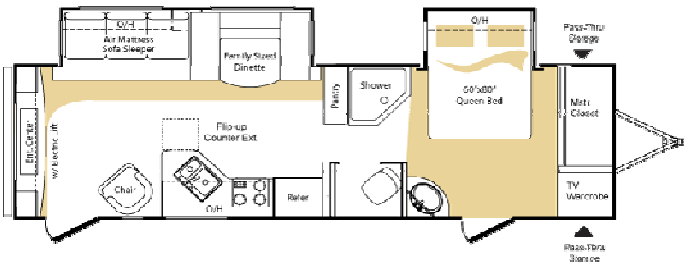
291TG 33' - 10,1m



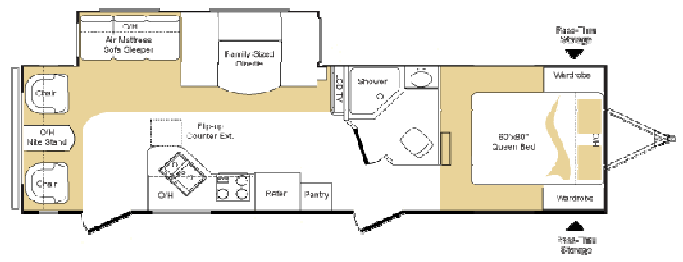
293RK TBD



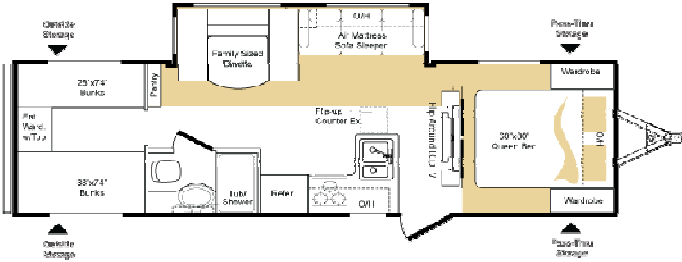
296RE 33' - 10,1m



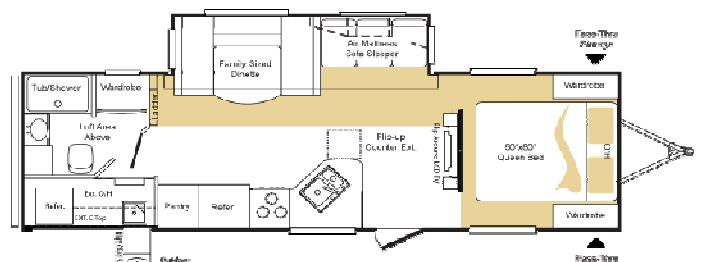
297RL 33'6" - 10,2m



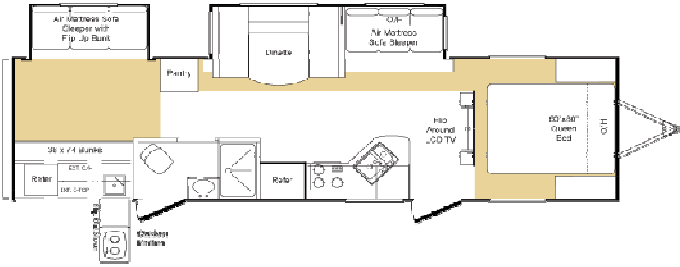
29BHS 33' - 10,1m



302LT 32'2" - 9,8m



303TG 35'5" - 10,8m



Chassis

- Powder-coated I-beam frame
- Tube style bumper w/sewer hose storage
- Electric slideout system w/manual override
- Radial tires
- EZ lube axles
- Electric brakes
- Full-size spare tire

EXTERIOR

- Fully enclosed underbelly
- Heated, enclosed holding tanks & gate valves
- Oversized lighted pass-thru storage
- Exterior shower w/hot & cold
- Exterior marine grade speakers
- Rain gutters w/downspouts
- Security light
- Entrance door light
- Triple entrance steps
- Outside 110V outlet & TV connection
- Fold entry assist handle

INTERIOR

Living Area

- U-shaped dinette w/storage below
- Adjustable "Komfort Kollapse" dinette table
- Ventilating windows on slideout end walls
- Overhead cabinets in slide rooms
- Residential grade carpet and padding
- Stain resistant fabrics
- Pleated fabric shades
- Designer window treatments
- Raised panel mortise & tenon cabinet doors
- Entertainment center w/TV cabinet

Kitchen

- Residential-size overhead cabinets
- Sink cover
- Flip up countertop extension
- 60/40 deep-bowl under-mount sink
- Metal high-rise faucet
- Linoleum floor
- Ball bearing full extension drawer guides

Bathroom

- Oversized tub/shower
- Tub surround w/shelves
- Foot pedal flush toilet
- Residential-size bath sink
- Medicine cabinet
- Skylight over bath
- Power roof vent

Bedroom

- 60"X80" innerspring mattress
- Bedsread w/matching headboard
- Wardrobe storage
- TV hook-up
- Reading lights

Appliances

- 26" LCD HD TV (296RE-32" LCD HD TV)
- 12V AM/FM/CD/DVD home theater system w/ surround sound effect speakers
- Double door refrigerator w/wood inserts
- Microwave with carousel
- Range hood and light
- High output range w/auto igniter

Utilities

- 2-30lb LP bottles w/auto changeover
- 30,000 BTU high-output furnace w/auto ignition
- 6 gallon gas/electric DSI hot water heater
- Water heater bypass kit
- Systems monitor panel
- Cable & satellite connections
- 55-amp power convertor
- 30-amp power cord

SAFETY

- Break away switch
- Tinted safety glass windows
- GFI receipts
- Carbon monoxide detector
- Smoke alarm
- Propane gas leak detector
- Fire extinguisher

Best In Class Package (All TT's)*

- Adjustable electric awning
- Power tongue jack
- (4) Electric stabilizer jacks
- Equa-Flex suspension system
- Aluminum wheels
- Air mattress sleeper sofa w/storage below
- Diamond plate front protection
- "Family Sized" dinettes
- Glacier Package
- LCD HD TV *Mandatory Package

www.keystonerv.com