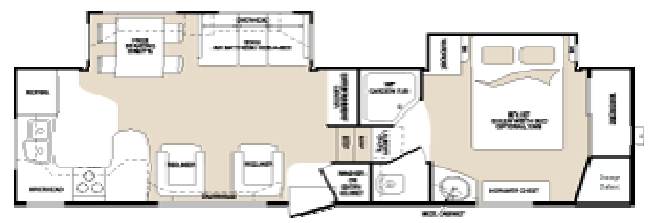


2010 Keystone Montana Fifth Wheel



2955RL 33'3" - 10,13m

3000RK 35'6" - 10,82m



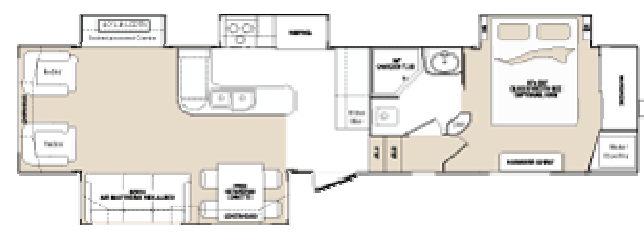
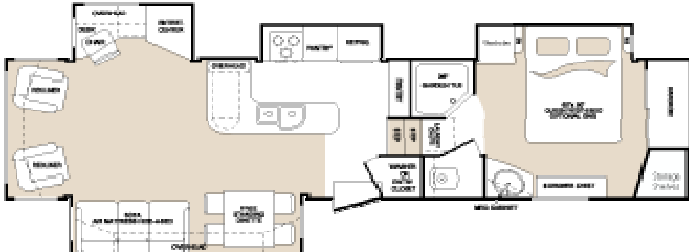
3075RL 34'8" 10,57m

3150RL 34'5" - 10,49m

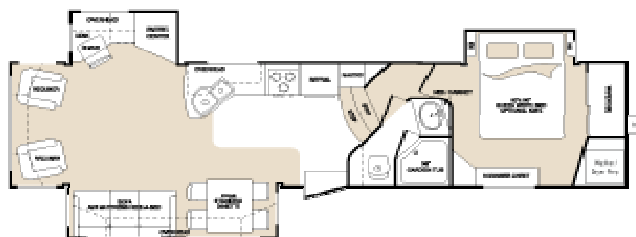


3400RL 37'4" - 11,38m

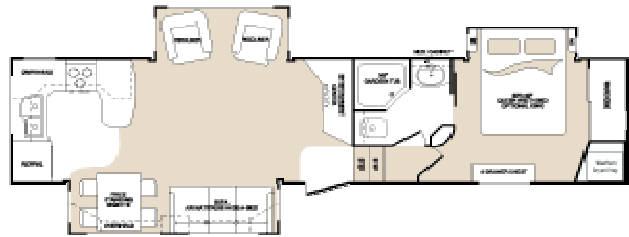
3455SA 37'4" - 11,38m



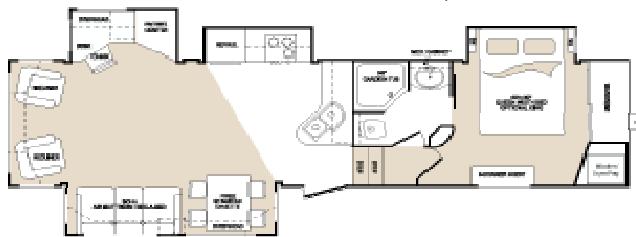
3465SA 37'4" - 11,38m



3585SA 37'4" - 11,38m



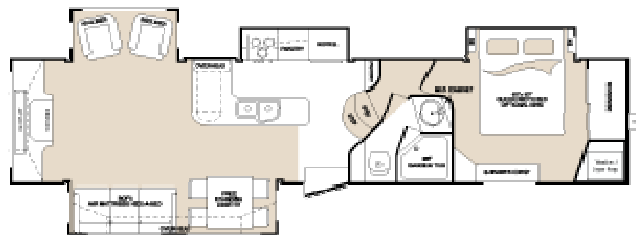
3605RL 37'4" - 11,38m



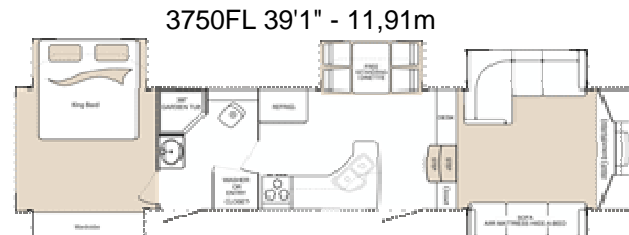
33m615RE 38'6" - 11,73m



3665RE 37'4" - 11,38m



3750FL 39'1" - 11,91m



Exterior Features

Aerodynamic front cap with Hitch Vision™	HE
Welded, totally aluminum-framed walls, floors and slide-outs	M
5" galvanized stamped steel roof rafters	M
2" laminated, gel-coated Filon™ sidewalls with dual Arctic Insulation Package: R-38 roof and R-21 floor	S
Vented attic	M
Insulated radius baggage doors with inside fasteners	M
Radius wrap lower walls	S
Seamless, one-piece underbelly enclosure	S
Heated, enclosed and insulated water lines, dump valves and holding tanks tested for 0° usage	HE
Seamless, one-piece 5/8" Dynaspan™ floor decking	M
"Wide Stance" front jack legs with adjustable snap jack pins	S
Rear accessory hitch	S
Rear roof ladder	M
Rear back-up lights	S
(2) patio scare lights on separate switches	S
MOR/ryde® rubber suspension system	M
Dexter E-Z Lube® axles	M
Heavy duty 8-lug wheels	S
Brand name 16" steel belted radial tires	S
Undermount spare tire and carrier	S
Deep tint safety glass windows	M
30" wide entry door	S
Fold away entry handle	M
Enormous drop frame pass through storage compartment with flush floor and no stain Congoleum®	HE
Enormous front storage compartment with double doors and hooks for power cord and water hose (over 142 cubic feet of total exterior storage)	S
110v and 12v outlets with cable/satellite hook-up in and mounting bracket for the bedroom TV pass through storage compartment	S
Slide topper awning package (double slides)	O
Slide topper awning package (triple slides)	O
Slide topper awning package (quad slides)	O
High gloss gel coated fiberglass exterior	O
Dual pane safety glass windows	O

MOR/ryde® hitch pin	O
Aluminum wheels	M
Interior Features	
32" HD LCD TV with pull-out swivel tray (40" HD LCD TV with electric lift on 3665RE and 3455SA)	HE
FM/CD/DVD player with 5.1 surround sound	M
Digital TV antenna with booster	M
Air mattress hide-a-bed sofa	M
(2) high-back recliners with footrest	M
Solid hardwood cabinet stiles, cabinet doors with raised panels and radius corners, end panels, crown	HE
Residential full extension steel drawer guides	S
High density residential carpeting	S
7 lb. Rebond carpet padding	S
Designer linoleum kitchen floor and entryway	S
True flush floor main slide rooms in living area with R-14 floor insulation	S
6' 6" extra tall main slide rooms with 17" tall, 15" deep overhead cabinets in living area	S
Day/night shades	S
Oil rubbed bronze hardware and lighting package	S
Ceiling fan with light kit	M
Computer work station with electrical outlet (most models)	S
High-back desk chair (3400RL, 3465SA, 3500RL, 3585SA, 3605RL, 3665RE only)	O
Sofa table	O
Electric fireplace (NA 2955RL and 3075RL)	O
End table and lamp	O
Kitchen Features	
Dupont™ Corian® countertop and sink with oversized bowls and pull-out faucet with sprayer	HE
(2) Flush mount Dupont™ Corian® sink covers	HE
Free standing dinette with swiveling and sliding table top plus leaf extension	HE
Free standing dinette chairs with plush upholstery and storage in the seats	S
Full Extension,wide,deep drawers	S
Residential-size overhead cabinets	S
30" OTR Microwave with built in range hood	HE
OTR Convection microwave with built in range hood	O
Large 8 cubic foot double door refrigerator	M
Raised hardwood front refrigerator panels	M
High output range with automatic ignitor	S
Range cover	M
22" oven with broiler	S
Booth dinette IPO free standing dinette (NA 3500RL)	O
12 cubic foot four door refrigerator (3075RL, 3400RL, 3455SA, 3605RL, 3665RL)	O
Bath Features	
36" garden tub with glass enclosure, (3) shelves and washcloth holder	S
Deluxe, oil rubbed bronze adjustable height shower head	S
Skydome over shower	M
Solid surface bathroom lavatory top with oversized molded sink and backsplash	HE
Single lever faucet	S
Adult height vanity with large base cabinet	S
Bright decorative vanity light	S
Residential-style medicine cabinet	S
Porcelain toilet with foot pedal flush	M
Heated commode room with 12v exhaust fan	S
36" Neo-angle shower IPO garden tub	O
Bedroom	
Single level bedroom/bathroom suite	S
Quilted bedspread and (2) pillow shams	S
Residential-sized chest of drawers	S
12 volt 19" High Definition LCD bedroom TV	S
Deluxe queen (60" x 80") innerspring Pillow Top mattress	M
Bedside nightstand shelves	S
Dual reading lights over bed	M
Spacious cedar lined front wardrobe with 12v light and 110v outlet near the head of the bed	M

"Shoe Closet" storage area in front wardrobe	S
Hidden safe under bed	M
King size bed	O
Utilities	
Easy Set Remote Control System: remote control electric rear stabilizer jacks, remote control electric front jacks, remote control 12v power awning, remote control hydraulic slide-outs, remote control patio scare light.	HE
Hydraulic selector valves	M
Central Exterior Convenience Center: 12v light, outside shower, No-fuss Freezeguard™ winterizing kit, black M tank flush, enclosed low point drains, city water connection, power tank fill, RG-6 cable/satellite hook-up	M
35,000 BTU furnace with automatic ignition and high capacity in-floor ducting	S
15,000 BTU air conditioner with Quick Cool	M
Wire and frame for 2nd air conditioner with remote sensor in bedroom and digital dual zone thermostat	M
Washer/dryer prep	M
12 gal. DSI gas/electric water heater	HE
80 amp Xantrex™ XADC converter	HE
50 amp service	S
50 amp detachable marine power cord	S
Systems monitor panel	S
Phone jack/data port	S
Satellite/cable hook-up	S
Black Tank Flush	M
Carbon monoxide detector	S
Fresh water capacity = 66 gal.	S
Grey water capacity = 93 gal.	HE
Black water capacity = 50 gal.	HE
Ducted 2nd 13,500 BTU A/C	O
Wireless rear/back-up camera	O
Fantastic fan vent (locations vary)	O
Generator ready (Onan 5.5 kw specs.)	O
Onan Marquis Gold 5.5 kw LP generator	O
Central vacuum	O
Easy store sewer boom (N/A to 3750 Front Lounge)	HE

M = Montana Package

HE = Hickory Edition Package

S = Standard

O = Option

<http://keystone-montana.com>