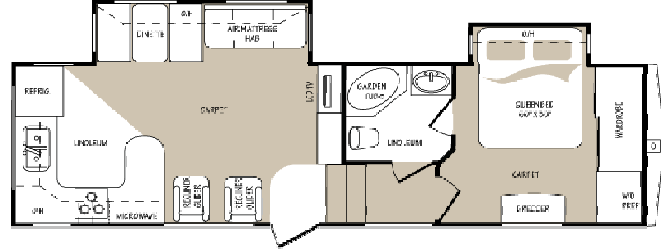
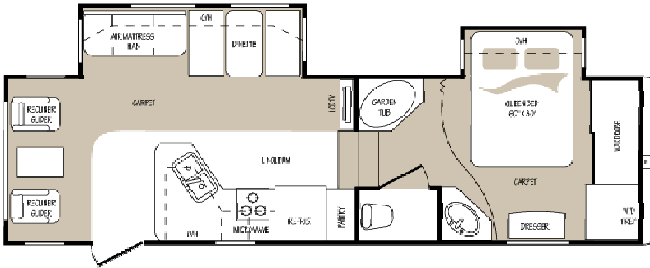


2010 Keystone Montana Mountaineer Fifth Wheel



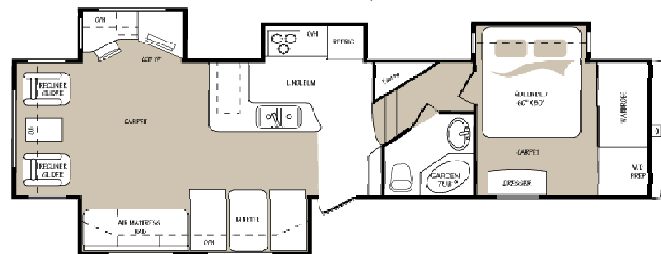
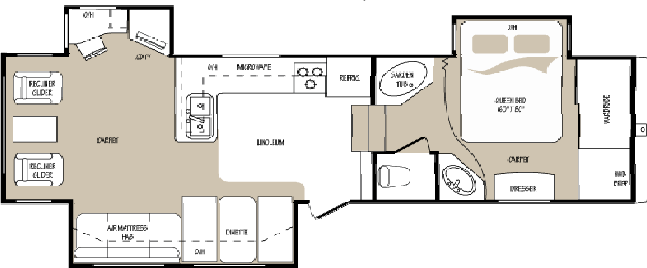
285RLD 31'7" - 9,63m

295RKD 33'3" - 10,13m



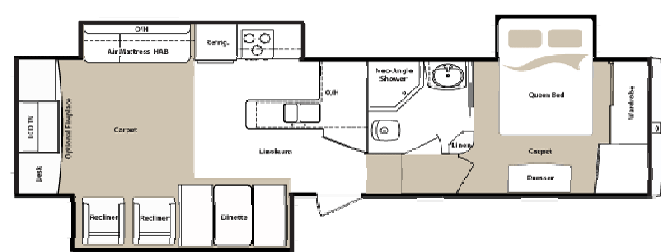
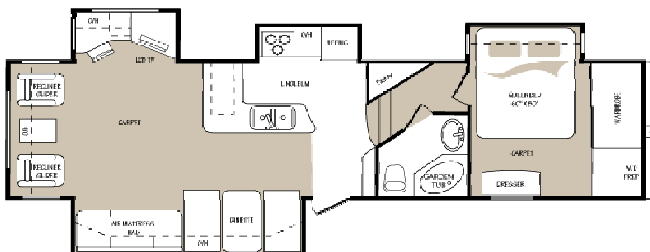
305RTL 34'4" - 10,46m

324RLQ 35'11" - 10,95m

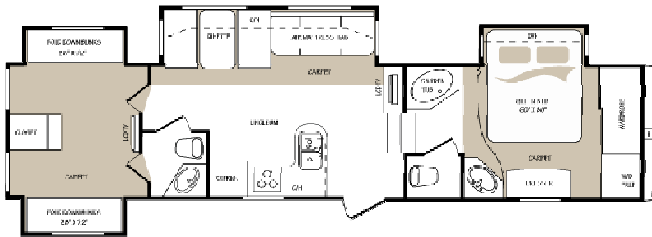


326RLT 35'4" - 10,77m

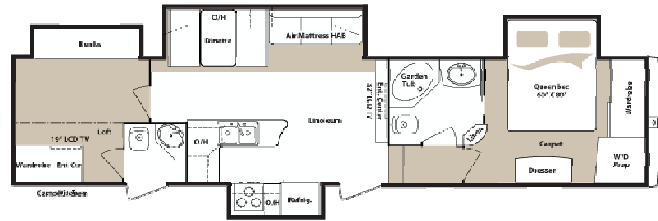
335RET 35'3" - 10,74m



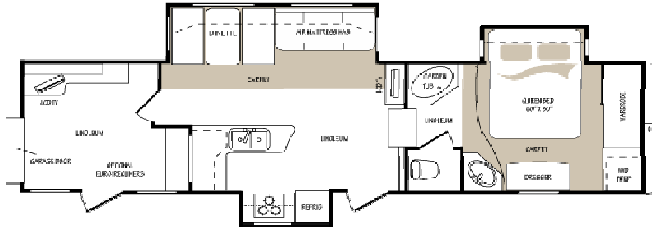
345DBQ 36'6" - 11,13m



346LBQ TBD



347THT 36'10" - 11,23m



- HE = Hickory Edition Package
- S = Standard
- NA = Not Available
- O = Option
- M = Moving to Montana Package

INTERIOR

- All wood slide out facia
- Residential carpeting and upholstery with fabric protector
- Tall slide room with "plate depth" overhead cabinets
- Dual swivel rocker (s) (most models)
- Recliner/gliders in place of swivel
- Euro recliner(s) with ottoman (347 only)
- High back desk chair
- Air mattress hide-a-bed sofa (most models)
- Pleated day/night window shades
- Deluxe oiled bronze decorative lighting
- Free-standing end table with lamp
- Decorative ceiling fan with 110V light fixture
- Deluxe crown molding
- 12' wraparound super sofa booth
- Jackknife sofa in place of (2) recliner/gliders (295 only)

BEDROOM

- Fabric Headboard
- Deluxe innerspring 60" X 80" mattress
- Dual reading lights over the bed
- Ceiling mounted coax and 12 volt plug
- 19" ceiling mount LCD HD TV
- Quilted bedspread, two pillows with shams
- Two bedside windows in the slide out
- Three-drawer bedroom dresser with full extension drawer guides (most models)
- Solid panel bedroom door(s) with oiled bronze handles
- Full width sliding mirror closet doors
- Under-bed storage with lift-assist struts
- Washer/dryer hookup (prep)

KITCHEN

- Shaker style hickory cabinet doors HE
- Full extension drawer guides HE
- Cabinet toe kicks M
- Lighted range hood with fan S
- Wide deep hickory drawers HE
- Solid surface countertops HE
- Dual sinks with high rise faucet M
- Garbage can S
- Silverware tray S
- Power vent fan in kitchen/living room S
- Booth dinette with storage cabinet and drawer S
- Free standing dinette with 4 chairs O

APPLIANCES

- 8 cu. ft. double-door refrigerator M
- Deluxe microwave oven with exterior exhaust fan M
- 15,000 BTU ducted roof air conditioner with HE wall-mounted thermostat and 'Quick Cool'
- 15,000 BTU A/C in place of 13,500 BTU A/C NA
- Electric fireplace (305, 324 or 326 only) O
- 2nd 13,500 BTU A/C (50 amp electrical service required) O
- Wire and Frame for 2nd A/C (50 amp service required) O
- Range Cover M
- High-output range with automatic igniter and 22" oven M
- 32" LCD HD TV HE
- Digital TV antenna booster M
- Power vent fan in bath/bedroom O
- Washer / dryer prep M
- RG-6 satellite prep M
- 12 volt 19" bedroom LCD TV O
- 12 volt 19" garage LCD TV (347 Only) O

EXTERIOR

- 8 lug, 16" wheels and Goodyear tires M
- Under mount spare tire and carrier M
- Equa Flex (TM) Suspension system O
- Aluminum wheels O
- Medallion (TM) high gloss sidewalls HE
- 5" fabricated steel truss rafters S
- Max turn fiberglass front cap S
- Block foam insulation in sidewall (R-9) S
- Residential fiberglass insulation in floor and roof (R-14_ Glacier package S
- Fully enclosed and heated underbelly S
- Enclosed and heated holding tanks and water lines S
- Hitch and security light S
- Extra wide 30" entrance door S
- Radius baggage doors with locking latches S
- Smooth-operating, easy-to-use steps S
- "Mountain Gold"radius wrap lower walls S

BATHROOM

Deluxe residential porcelain toilet
 Larger residential-size bath sink
 Tub/shower with oiled bronze glass enclosure
 Medicine cabinet with large mirrored door
 Oiled bronze bath sink faucet
 Oiled bronze vanity light
 Full linoleum bath flooring
 Solid panel doors with oiled bronze handles
 Deluxe wood grain towel holder
 12 volt fan in the commode area
 Sky dome over the tub

UTILITIES

Water heater by-pass kit
 10-gallon gas/electric DSI water heater
 Systems monitor panel
 55 amp converter
 50 amp electrical service
 Generator ready (Onan 5.5 kw - LP Generator)
 Onan Marquis Gold 5.5 kw -LP Generator
 (Requires Generator Ready)

www.keystonerv.com

M	Dexter E-Z Lube Axles	M
S	12 volt electric patio awning	HE
S	110V outlet and TV hook up	S
S	Dual patio security lights	M
S	Outside speakers with control switch	M
S	Outside shower with quick connect	M
S	Black tank flush	M
S	Power tongue jack	NA
S	Slide awning package (double slides)	O
M	Slide awning package (triple slides)	O
M	Slide awning package (quad slides)	O
	Pass -through slide trays	O
M	Dual pane windows	O
M	Deep tint safety glass windows	M
S	Drop frame pass through storage compartment	HE
S	Gen II eas set remote control system	HE
M	Electric rear stabilizer jacks	HE
O	Electric front stabilizer jacks	M
O	Exterior convenience center	HE
	Fold away entry handle	M
	Rear roof ladder	M