

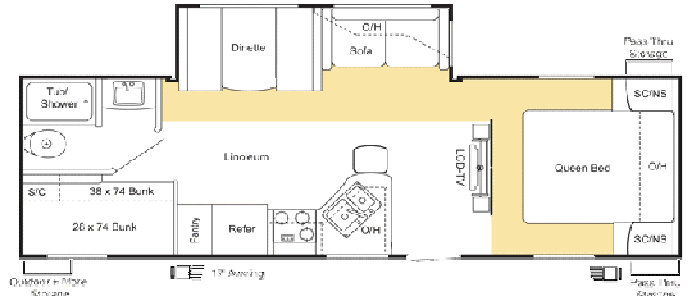
# 2010 Keystone Sprinter Travel Trailers



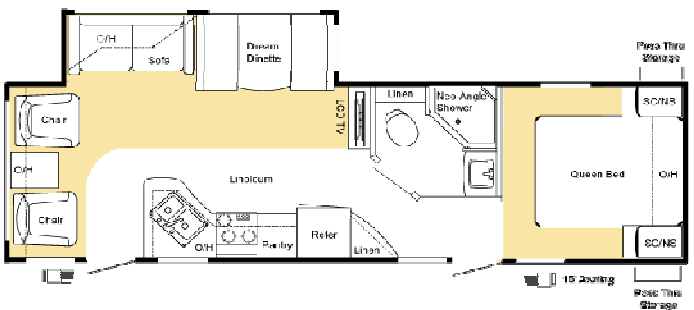
250RBS 28'1" - 8,56m



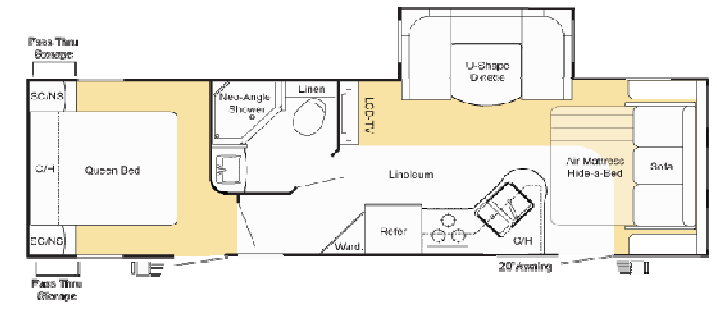
264BHS 30'6" - 9,3m



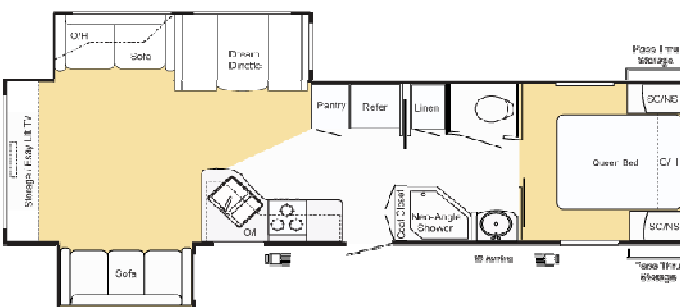
276RLS 31'11" - 9,73m



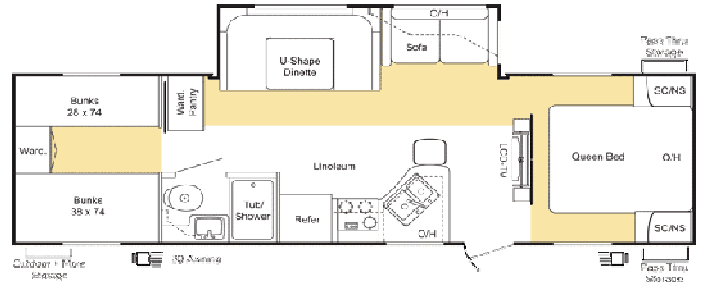
282FLS 31'10" - 9,7m



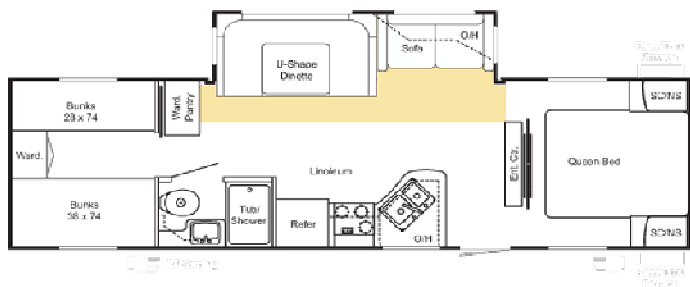
297RET 34'11" - 10,6m



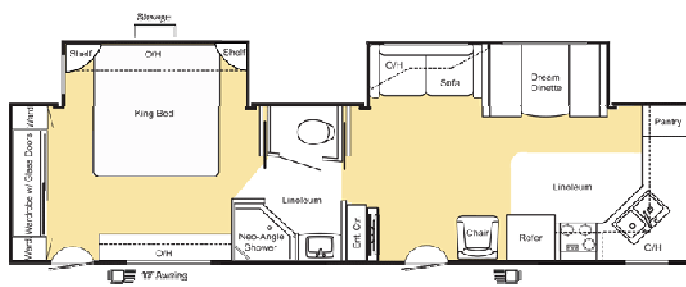
299BHS 33'2" - 10,1m



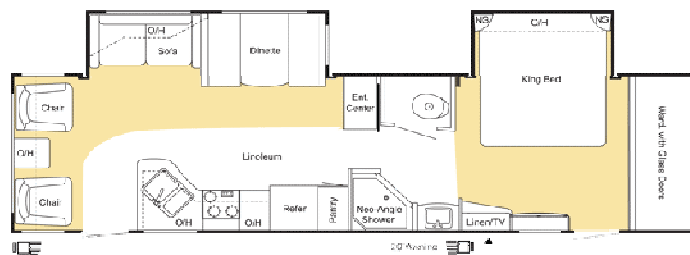
29BH 33'2" - 10,1m



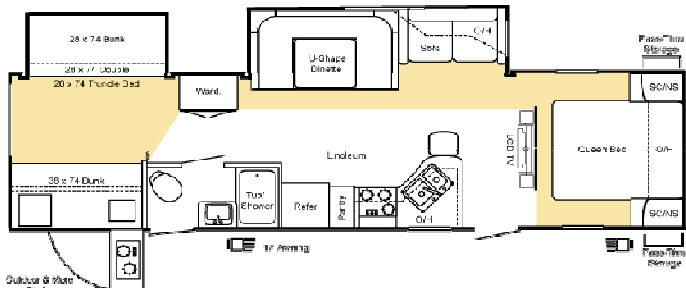
300KBS 34'5" - 10,5m



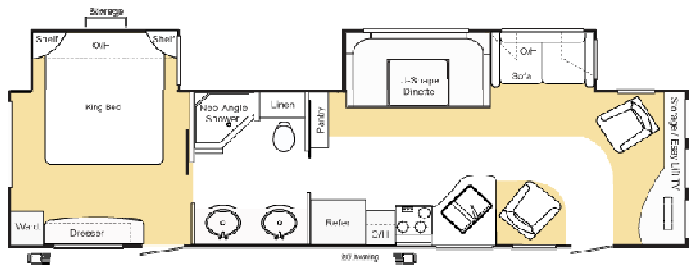
310KBS 35'3" - 10,7m



311BHS 35'4" - 10,8m



318FLS 35'10" - 10,9m



**Interior Features**

- 13,500 BTU ducted air conditioner with "Quick Cool"
- 30 amp electrical distribution panel
- 12 Volt, 55 amp converter
- 30,000 BTU auto-ignition furnace with thermostat
- Water heater bypass for easy winterization
- Residential cabinet hardware
- Large picture window at dinette
- 12 volt slide room lights for dry camping
- Home Theater Surround Sound® system
- In floor ducted heat
- Central monitoring system for all tanks and battery
- Full extension ball bearing drawer guides
- Residential slide out pantry

**Exterior Features**

- One touch electric awning
- Lockable, radius baggage doors
- Rear bumper storage
- Gas bottle cover with easy access panel
- Easy opening triple entry step
- E-Z Lube™ axles
- Exterior grab handle for entry assistance
- Tough guard painted skirt metal
- Patio light with switch
- Rain gutters and spouts
- Two 30 LBS LP bottles with automatic change-over
- Roto-cast seamless holding tanks
- Keystone Original space maker 47 gallon fresh water system.
- 36' 30 Amp power cord
- Exterior water station
- Exterior BBQ hook-up
- Radial Tires
- Easy store picnic table
- Outside speakers
- Front diamond plate
- Electric stabilizer jacks

**Kitchen Features**

**Living Room Features**

- Cable TV hook-up with antenna and signal booster
- Satellite prep
- High grade carpeting with pad
- Mastercraft furniture
- Residential fabric-covered valances with tab top drapes
- Angled overhead storage in the slide room
- Home theater DVD / CD /AM /FM / MP3
- Air bed sofa
- 26" LCD TV (TT)

**Bath Features**

- Large vanity sink
- Porcelain foot flush toilet
- Residential medicine cabinet with mirror
- ABS one piece tub surround
- Skylight over tub
- Reinforced tub support
- Attic fan
- GFI receipts in the bathroom

6 gallon gas and electric DSI auto ignition water heater  
3 burner high output gas range  
Deep 60/40 residential sink  
Metal high arched faucet  
Lighted range hood with exhaust fan  
Microwave with carousel  
17" oven  
Reversible dinette seat cushions  
EZ slide storage tray  
Dometic double door refrigerator  
Overhead cabinets above the sink  
Two oversized pots and pan drawers

### **"Customer First" Safety Package**

Tinted safety glass windows  
Dual hitch safety chains  
Manual override for the slide rooms  
Fire extinguisher  
Smoke detector  
Carbon monoxide detector  
Egress windows  
LP gas leak detector  
Break away safety brake  
4 wheel electric brakes  
Hitch light  
Door side and off door side clearance lights  
Egress windows

### **Bedroom Features**

Cable TV hook-up  
High grade carpeting with pad  
Under bed storage with gas struts  
Color matched bedspread  
Bedroom reading lights  
King bed (Bedroom slide TT)  
Easy zzzzs springless pillow top mattress  
Night stands with 110 volt outlets  
Upgraded headboard (TT)

### **"Camping Made Easy" Package**

Laminated aluminum framed sidewalls  
Enclosed underbelly  
Easy store picnic tables  
Exterior speakers  
E-Z Lube® axles  
Overhead slide room cabinets  
Skylight in the shower  
Six gallon gas / electric DSI water heater  
Microwave  
Oven  
Easy find light switches  
13.5 ducted air conditioner  
DVD home theater system with Surround Sound®

[www.keystonerv.com](http://www.keystonerv.com)